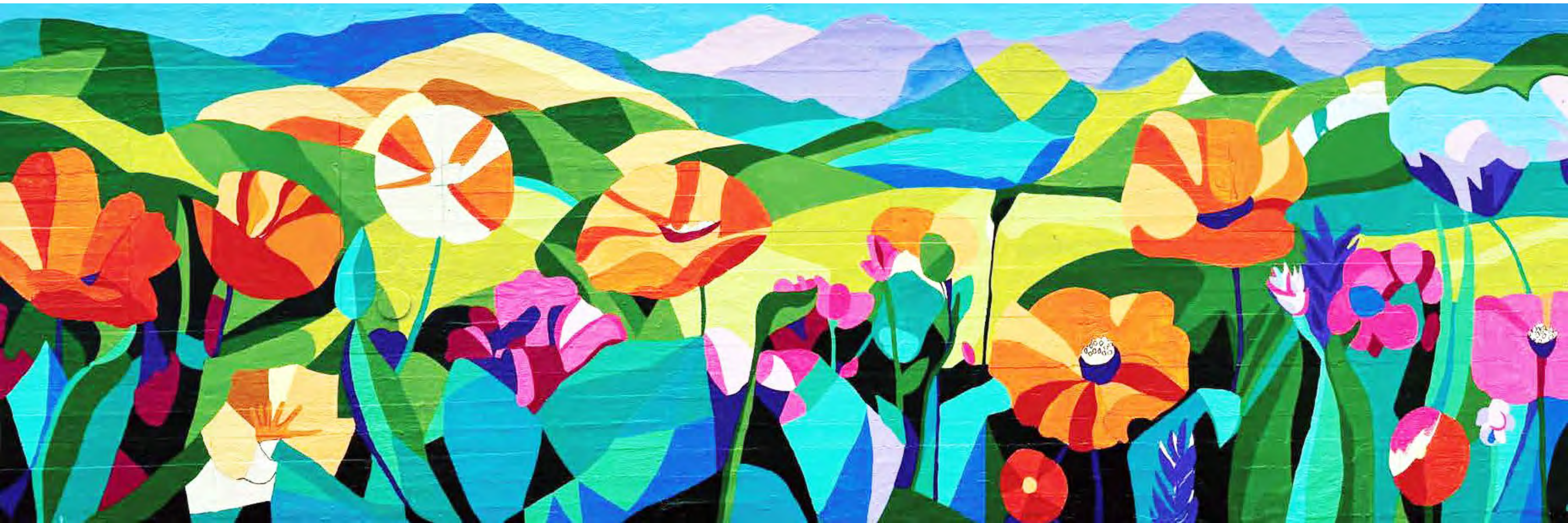


San Miguel Parks

6. 4. 2026

la 403 spring quarter 2026 | landscape architecture | cal poly



San Miguel Park System

- **LA 403:** a 3rd-year landscape architecture studio focusing on systems and relationships using multiscale applications
- A 5-week design process by Miran J. Day (instructor) and 15 students

Aiden Argue

Wenceslao Campos Bonal

Brianna Contreras

Ted Donahue

Maia Ernst

Jennifer Grajeda

Aiden Kempf

Jeremy Mamaril

Lili Menkal

Youssef Saleh

Adah Small

Jack Spang

Anna Spurlock

Solenne Thelliez

Talar Yerganian

San Miguel Park System

Project Process: 5 weeks from 5/4 to 6/5

1. **Stakeholder group-based project** research, analysis, and field trip
2. Stakeholder group **concept exploration**
3. **Negotiations** among stakeholder groups
4. **Proposal development** and feedback
5. **Master plan and site development**
6. Project assembly

Stakeholder groups:

- Residents
- Special interest group
- Local industries and businesses
- Government agencies
- Environmental advocates





1. Project research, analysis, and field trip

Stakeholder groups:

- Definition of community health and well-being
- Field study
- Stakeholder focused inventory and analysis





1. Project research, analysis, and field trip

Stakeholder groups:



- Residents
- Special interest group
- Local industries and businesses
- Government agencies
- Environmental advocates

The residents' stakeholder group defines **"Community health means living in a safe, shaded, and connected town where people can comfortably live, commute, gather, and spend time outdoors."**

Community Health

For the residents of San Miguel, community health means living in a safe, shaded, and connected town where people can comfortably live, commute, gather, and spend time outdoors. Community health is access to spaces where families, children, and seniors can socialize, relax, and feel a sense of belonging in their own community.

Community Comfort

Shade Trees Parks, gathering spaces, event spaces, heat island reduction

Safety and Access

Safe, accessible streets with lighting, sidewalks, crosswalks, and bike paths that supports all ages

Mobility and Common Space

Common spaces, trails, proximity zones, flood zones

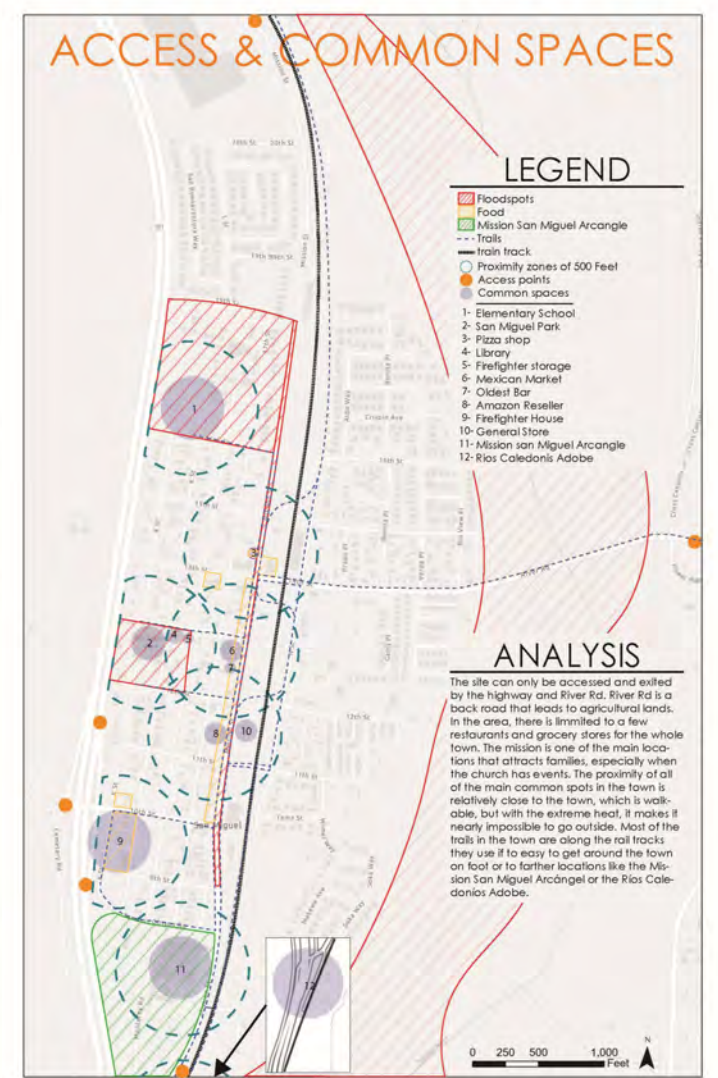
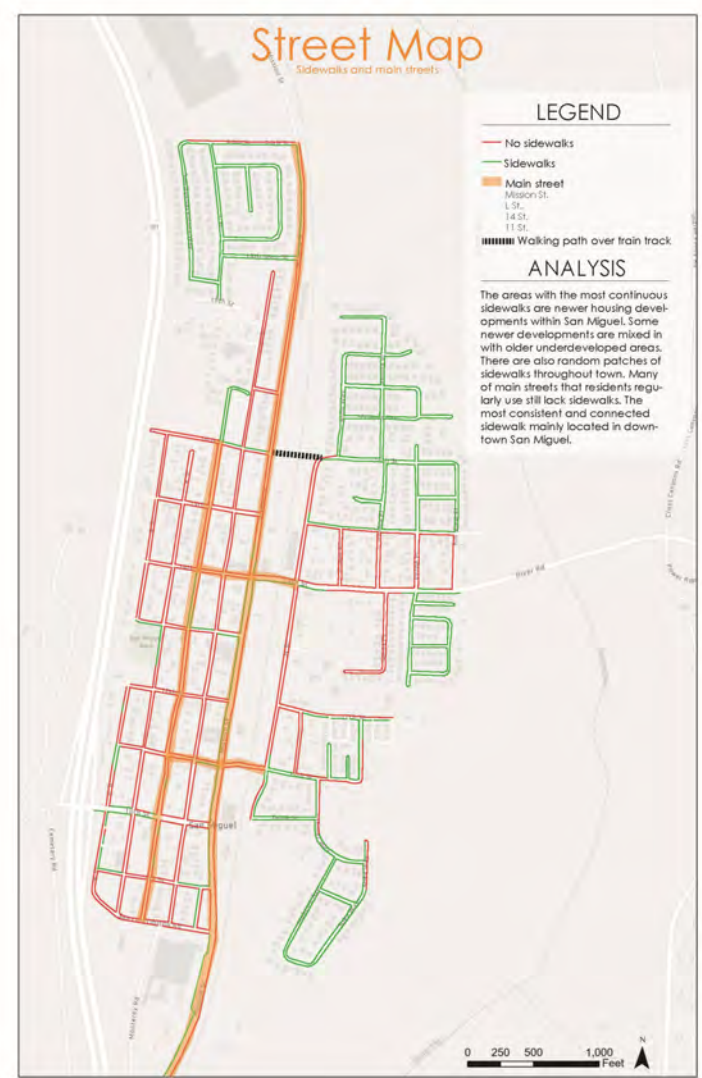
Population Demographics

Age Range

The age range graph shows that San Miguel has a relatively young population compared to many other communities in California. A large portion of the population is under the age of 18 and between ages 25-44. This information is important because it can help determine what types of community spaces and services are needed, such as schools, parks, recreation areas, healthcare, and pedestrian infrastructure. Source: Data USA

Race & Ethnicity

The race and ethnicity graph shows that the majority of residents in San Miguel identify as Hispanic or Latino, with 25% being Mixed. This data helps explain the cultural diversity within the community and can help planners better understand who uses parks, public spaces, schools, and community resources. Source: Data USA



How Residents are doing

Mobility and Common Space

- Low crime rate, but lighting and crosswalk are limited
- High-risk intersections: Mission St. & 11th St, Mission St. 14th St.
- Highly car-dependent community.

Community Comfort

- Average temp 91F in July inland areas often > 100F
- Limited Tree Canopy
- Park is are unable, but best in early morning or evening

Safety and Access

- Missing sidewalks, lighting, crossings in many areas
- Senior, children, low-income and Spanish speaking residents most affected.
- Disadvantaged community: many commute outside town for work.
- Car dependent Community

Key Concerns

- Extreme heat due to lack of shade
- Heat exposure during warmer months
- Outdoor spaces are uncomfortable and discouraging walking or recreation
- Limited walk ability throughout the community
- No continuous sidewalks
- Unsafe railroad crossing
- Limited access to parks, trails, and community services

Possible Intervention

- High-visibility crosswalks
- Improved street lighting
- New sidewalks and curb ramps
- Protected bike lanes
- Expanded walking trails
- Street tree planting and shade structure
- Pocket parks and gathering plazas
- Outdoor seating areas
- Community gardens
- Public art installations
- Native landscaping
- Playground and recreation upgrades
- Outdoor fitness spaces
- Park expansion
- Safer school routes



1. Project research, analysis, and field trip

Stakeholder groups:

- Residents
- **Special interest group**
- Local industries and businesses
- Government agencies
- Environmental advocates

The special care's stakeholder group says "Community health in a rural setting, particularly for children and seniors, is defined by **access to environments that support physical, mental, and social well-being.**"



COMMUNITY ASSETS AND LAND USE



Legend

- Parks & green space
- Church
- Medical center
- Schools & Library
- Senior center
- Community Center unusable due to Lions Club
- Railroad
- Residential areas
- Vacant land

30% of residents are under age 15, yet only 2 parks serve the entire community: a mismatch between the youth population and recreational space

No dedicated recreational programs for elementary-aged children, limiting early opportunities for physical activity

Lillian Larsen Elementary functions as the primary activity space, indicating reliance on a single asset for children's recreation

Community assets are dispersed and not within easy walking distance, creating access challenges for both children and seniors

Lack of social and community spaces contributes to senior isolation and mental health challenges

Limited access to safe outdoor spaces contributes to reduced physical activity and rising obesity in children

EXISTING CONDITIONS



SITE IMAGES

1 Vacant lot
potential for green space
community gathering/ farmer's market? optimal location on main street

2 Need for sidewalk
major need for sidewalk on L street to the Elementary School
Bike/ Walk to School Day event remnants
Graffiti/ tagging at Salinas River

3 Ideal parking shade
parking shading structure with solar panels at Lillian Larsen Elementary
good strategy to implement across San Miguel
Vacant lot adjacent to Senior Center

4 Road safety issues
lack of crosswalks at many intersections

5 graffiti likely from teenagers
lack of activities to keep them busy

6 large empty lot, has not been used in years, two lots flank wither side for the Senior Center
overgrown grass poses fire hazard
Safer railroad crossing

7 Desire path to Dollar General
very steep slope
Slippery
lots of foot traffic

8 No sidewalk by school
no sidewalk on either side for the street surrounding Elementary School
very unsafe for children going to/from school

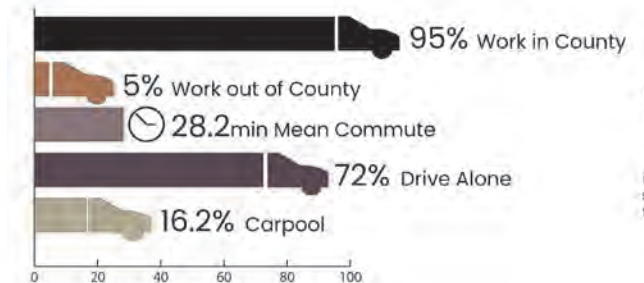
9 the only safe rail road crossing to exist leads directly to elementary school



1. Project research, analysis, and field trip

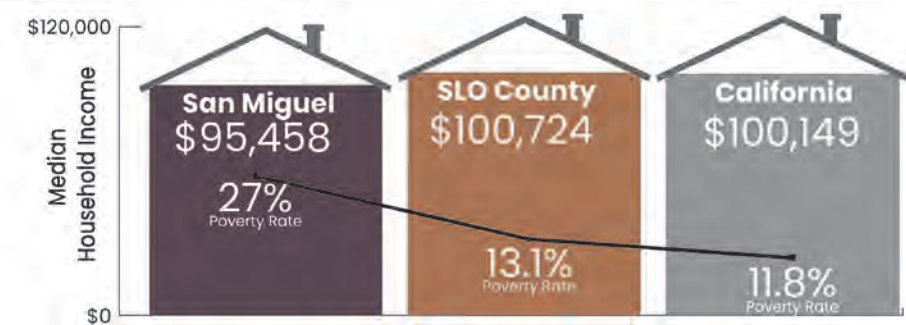
Stakeholder groups:

- Residents
- Special interest group
- **Local industries and businesses**
- Government agencies
- Environmental advocates



Census Data

Jen | Adah | Jack
 Commuting, income, and poverty data show how San Miguel's local economy is vulnerable. A lot of residents leave town for work, which takes from daily activity and spending into nearby cities like Paso Robles. At the same time, lower household incomes can limit how much residents are able to spend at local shops, restaurants, and services. All these conditions show the need for strategies that support local jobs, and strengthen everyday businesses that serve the community.



The local industries and businesses' stakeholder group defines *"In a healthy community, local businesses and industries should not only survive but prosper; residents should have access to stable, local jobs and basic services, allowing the town to thrive on cyclical income."*

San Miguel Local Industries and Businesses Site Analysis

Adah | Jack | Jen



- STRENGTHS**
- =Community identity
 - =Small town feel
 - =Creek access (when full)
 - =Small-scale entrepreneurship from local residents

- WEAKNESSES**
- =Lack of sidewalks
 - =Lack of greenspace
 - =Food desert
 - =Noise from railroad and freeway
 - =Nighttime security

- OPPORTUNITIES**
- =Empty lots
 - =Community engagement
 - =Mission St.
 - =Existing desire paths
 - =Historic buildings and facades

- THREATS**
- =Sewer system
 - =Tourism
 - =Language barriers
 - =Permits and Policies
 - =San Miguel Lions Club

SWOT

DESIRE PATHS

Unused Space
Lack of Sidewalk





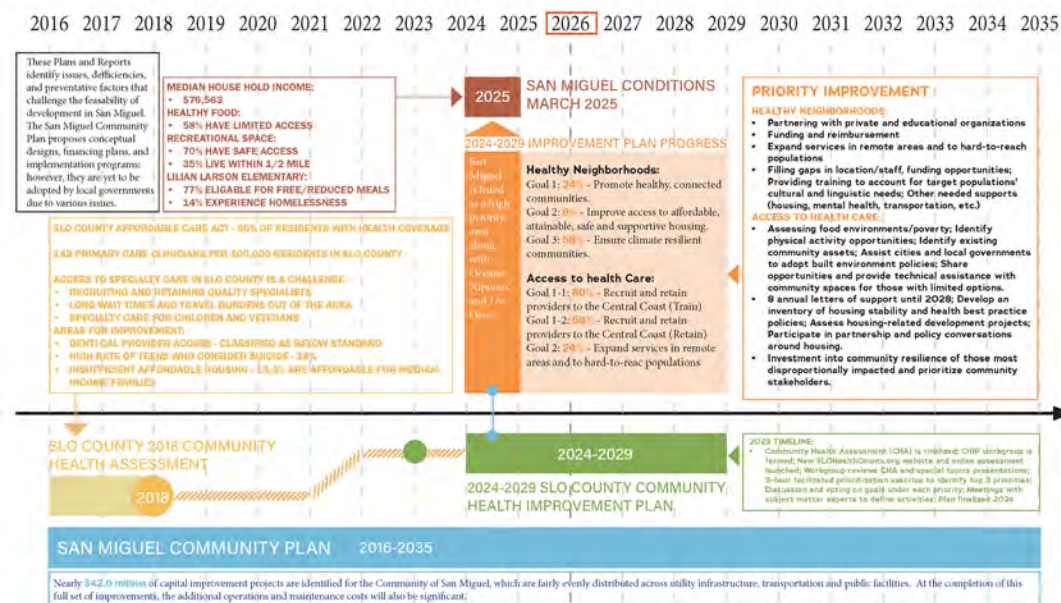
1. Project research, analysis, and field trip

Stakeholder groups:

- Residents
- Special interest group
- Local industries and businesses
- **Government agencies**
- Environmental advocates



The government agencies' stakeholder group defines "community health is characterized by **the resident well-being, social connectivity, environmental quality, and the access to nature** for a community."



Connectivity

These policies regulate movement. They ensure that different parts of the town like the Mission, the Central Business District, and residential areas don't become isolated "islands."

- **Multi-Modal Circulation (Policies 5-1 – 5-14):** This section regulates the balance of traffic. It's not just about cars; it covers everything from transit stops to emergency vehicle access. It ensures that the town's grid can handle growth without losing its walkable feel.
- **Pedestrian & Bicycle Links (Policy 3-8):** This regulates non-motorized safety. It specifically calls for dedicated paths connecting the Central Business District to the Mission. This ensures that a resident can safely travel across town without needing a car for every errand.
- **Land Use Integration (Policies 3-11 – 3-25):** These regulate the placement of buildings. They ensure that commercial and residential zones are connected in a way that makes sense, preventing high-traffic commercial areas from being dumped directly into quiet residential cul-de-sacs.



INTERVENTIONS - PRIORITY AREAS

Protected Bike Paths - with little to no lighting, no stoplights, and blind corners, protected bike lanes need to be more extensive and protected in San Miguel as the community is greatly bikeable and this promote alternative transport and community safety.

Sidewalk Infrastructure - while prevalent in the downtown area, sidewalks are essential improvements to further connect the community. Pedestrian circulation networks should be developed between focal areas in San Miguel like the school, downtown, and opposing sides of the train tracks.

Lighting - to reduce the overall risk for community members, lighting is pertinent as without traffic lights (in addition with the blind corners and steep topographic changes) accidents are prone and crime can occur more freely.

Street trees - due to San Miguel's location inland, shielded from the cooling effects of the marine layer, street trees and other vegetation are necessary to reduce heat stress and improve walkability while assisting the climate.

Legend:

- 1 Protected Paths
- 2 Sidewalk Infrastructure
- 3 Lighting
- 4 Street Trees



1. Project research, analysis, and field trip

Stakeholder groups:

- Residents
- Special interest group
- Local industries and businesses
- Government agencies
- **Environmental advocates**

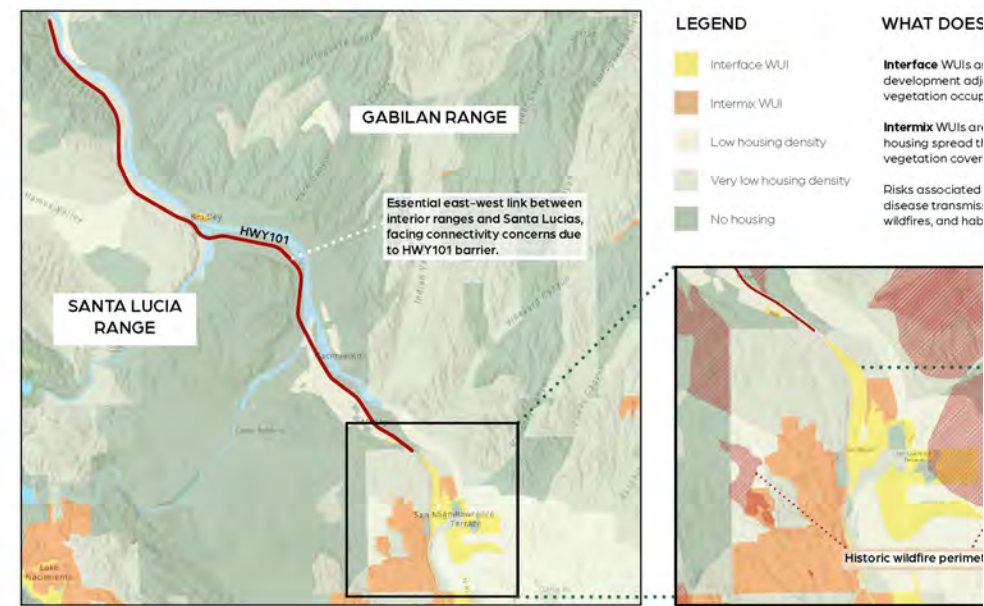
The Environmental advocates' stakeholder group defines

*“Community environmental health in San Miguel is **measured through quality** of the air, soil, and water conditions shaped by land use, **connectivity** for the habitats of key wildlife species, and **biodiversity** reflected in native plant integrity and urban canopy coverage.”*

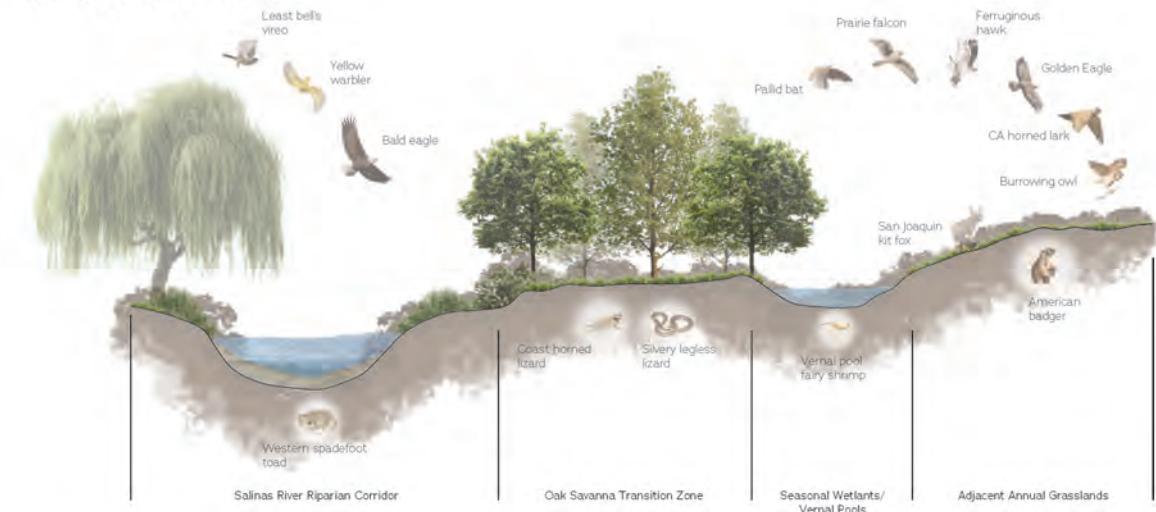


WILDLIFE URBAN INTERFACE

Wildlife Urban Interface (WUI) are classes of transitional zones between undeveloped wildlands and urban areas, where humans and wildlife are more common than in strictly wild or strictly developed areas. These areas face unique challenges to ecosystem health and wildlife/human safety.



SENSITIVE WILDLIFE



INFORMATION

- Salinas River Corridor:**
 - Bald eagle
 - Least bell's vireo
 - Yellow warbler
 - Pallas bat
 - Western spadefoot toad
 - American badger
- Grasslands:**
 - San Joaquin kit fox
 - American badger
 - Burrowing owl
 - CA horned lark
 - Ferruginous hawk
 - Golden eagle
 - Prairie falcon
 - Pallas bat
- Oak Woodland:**
 - Coast horned lizard
 - Silver legless lizard
 - Pallas bat
 - Golden eagle
 - American badger
- Seasonal Wetlands/Vernal Pools:**
 - Western spadefoot toad
 - Pallas bat
 - American badger
 - Golden eagle
 - Vernal pool fairy shrimp

STRONGEST ECO. ASSOCIATIONS

- American badger & Burrowing owl
 - badger burrows often reused by owls
- San Joaquin kit fox & American badger
 - both depend on open grassland with abundance small mammals & breakable soils
- Golden eagle & Ferruginous hawk & Prairie falcon
 - these raptors hunt over the same grasslands
- Least bell's vireo & Yellow warbler
 - both associated with dense riparian vegetation



2 Stakeholder group concept exploration

Stakeholder groups:

- Residents
- Special interest group
- Local industries and businesses
- Government agencies
- Environmental advocates

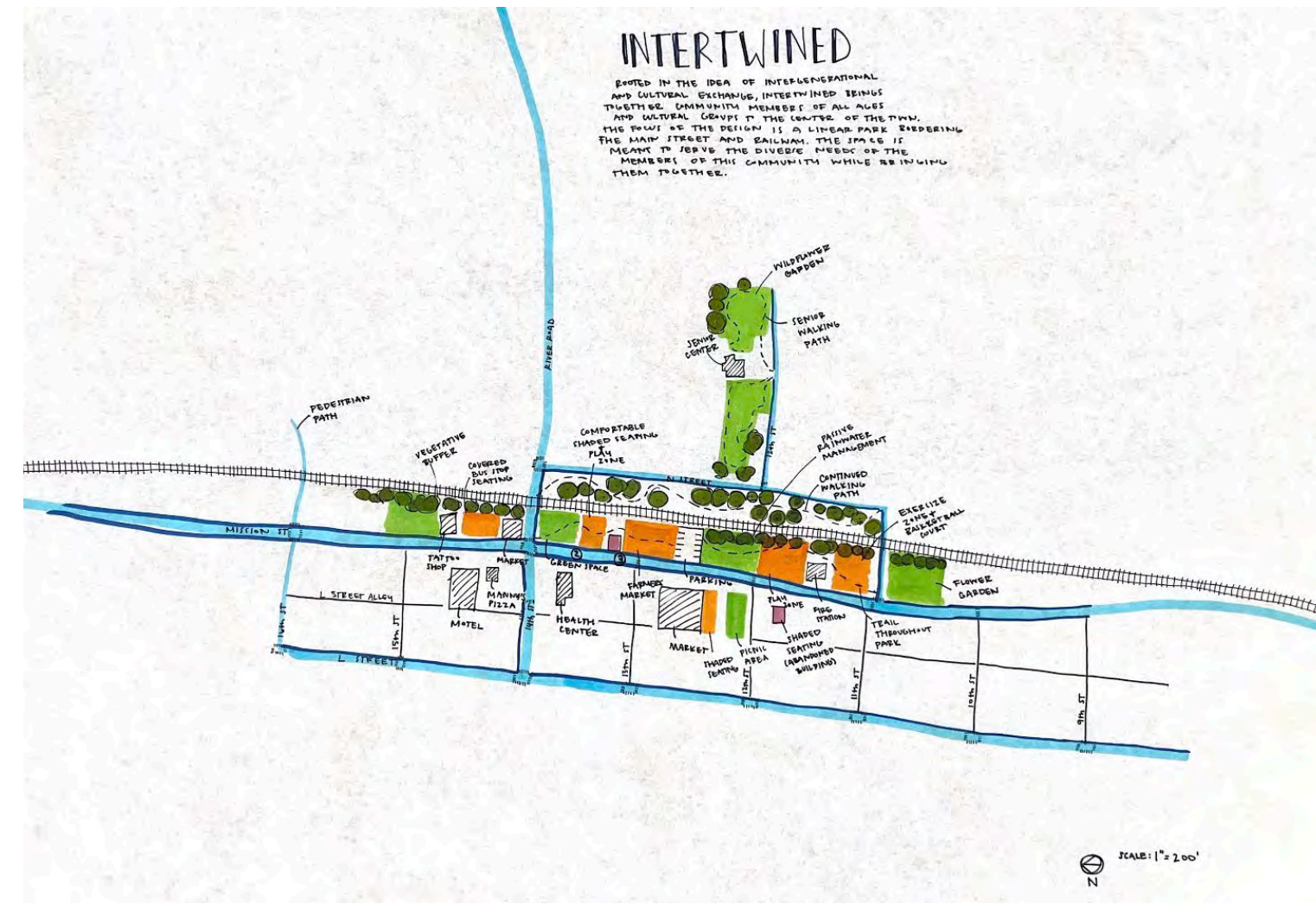




2 Stakeholder group concept exploration

Stakeholder groups:

- Residents
- **Special interest group**
- Local industries and businesses
- Government agencies
- Environmental advocates



SCALE: 1" = 200'



2 Stakeholder group concept exploration

Stakeholder groups:

- Residents
- Special interest group
- **Local industries and businesses**
- Government agencies
- Environmental advocates



BUSINESS + INDUSTRY

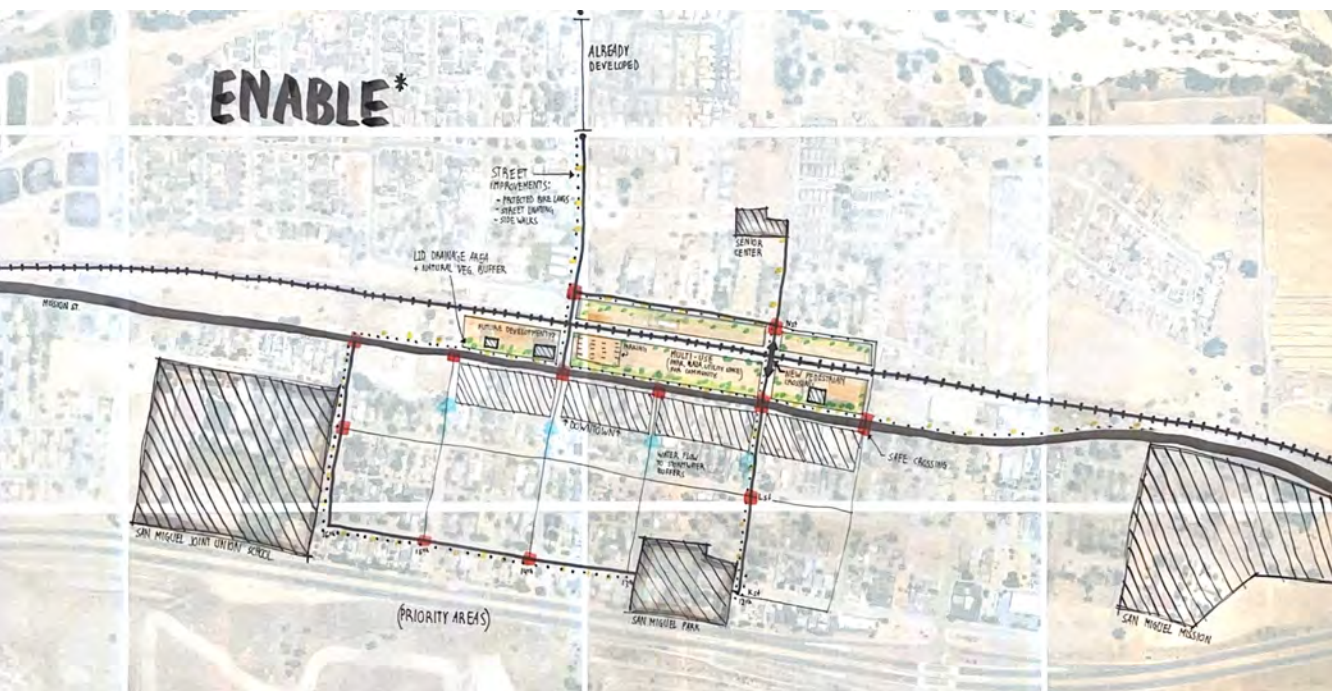
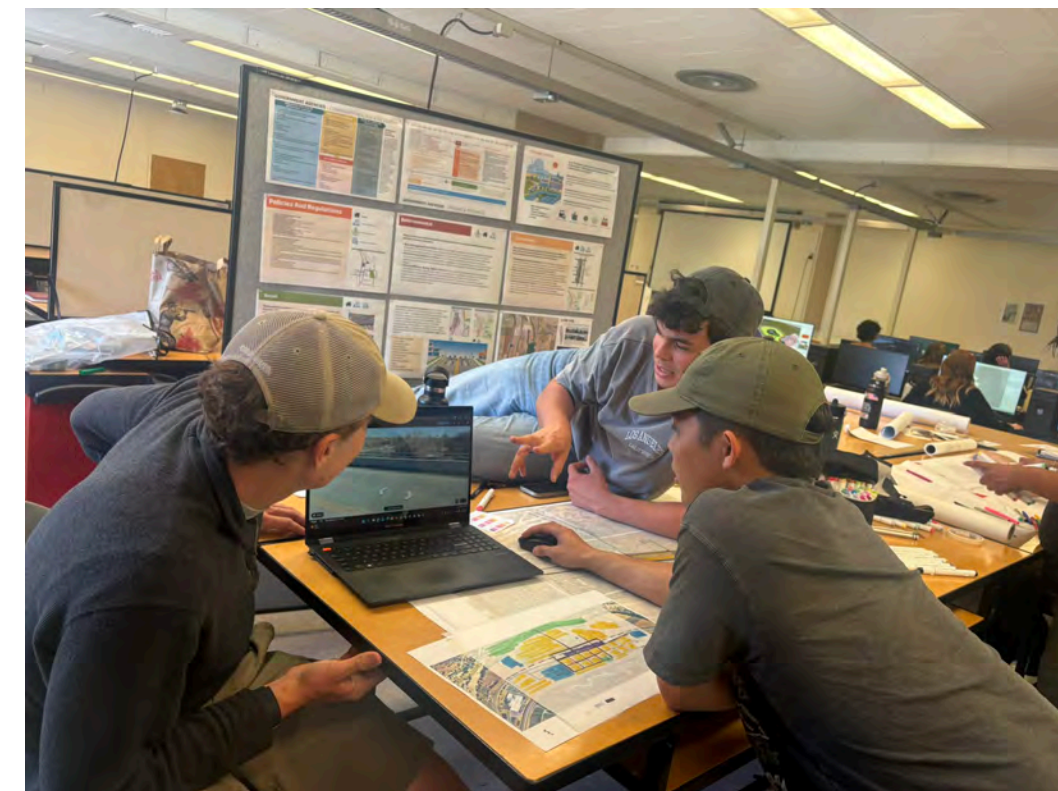




2 Stakeholder group concept exploration

Stakeholder groups:

- Residents
- Special interest group
- Local industries and businesses
- **Government agencies**
- Environmental advocates

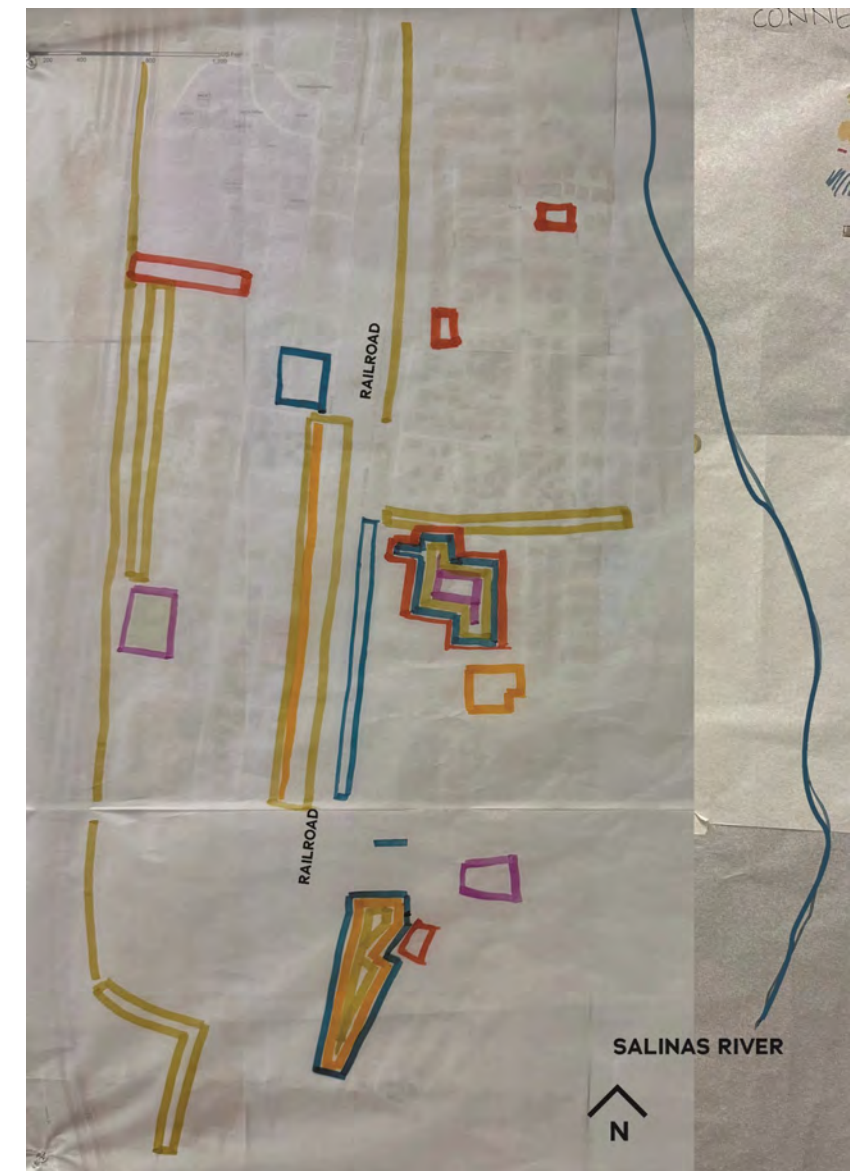
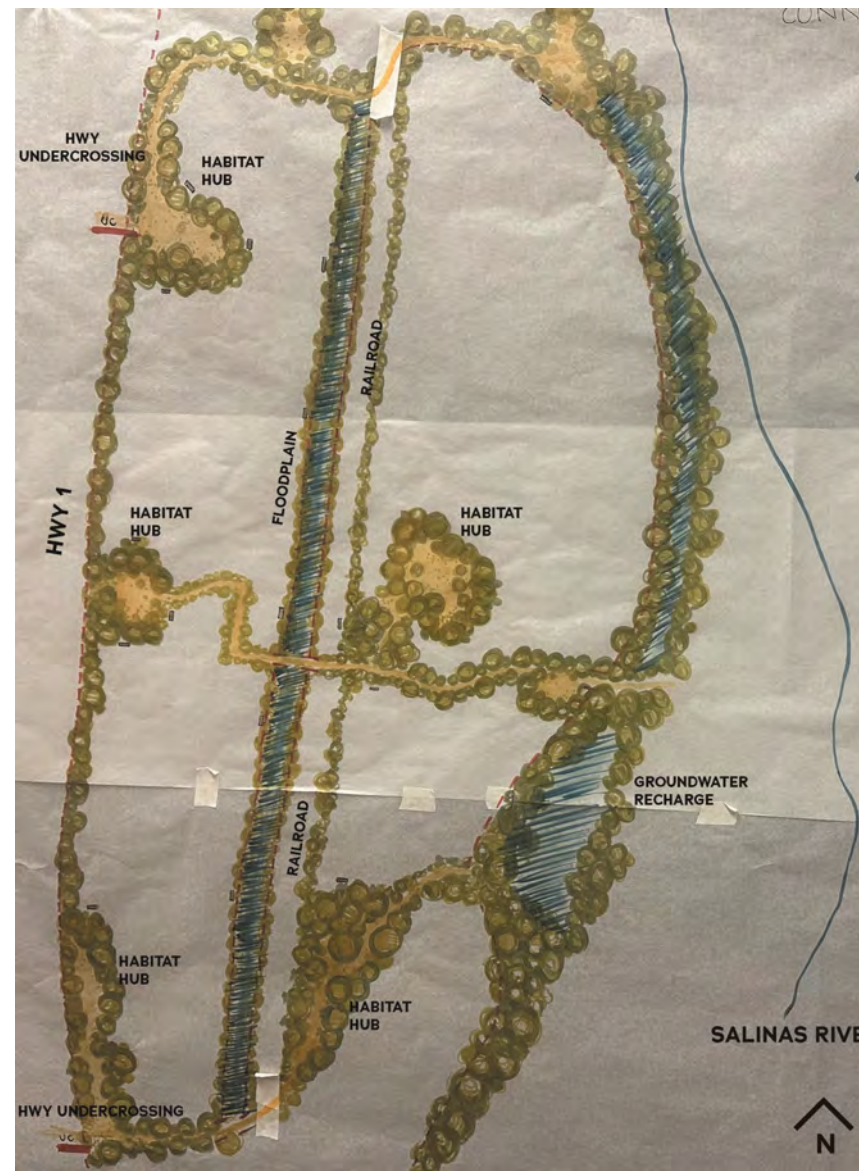




2 Stakeholder group concept exploration

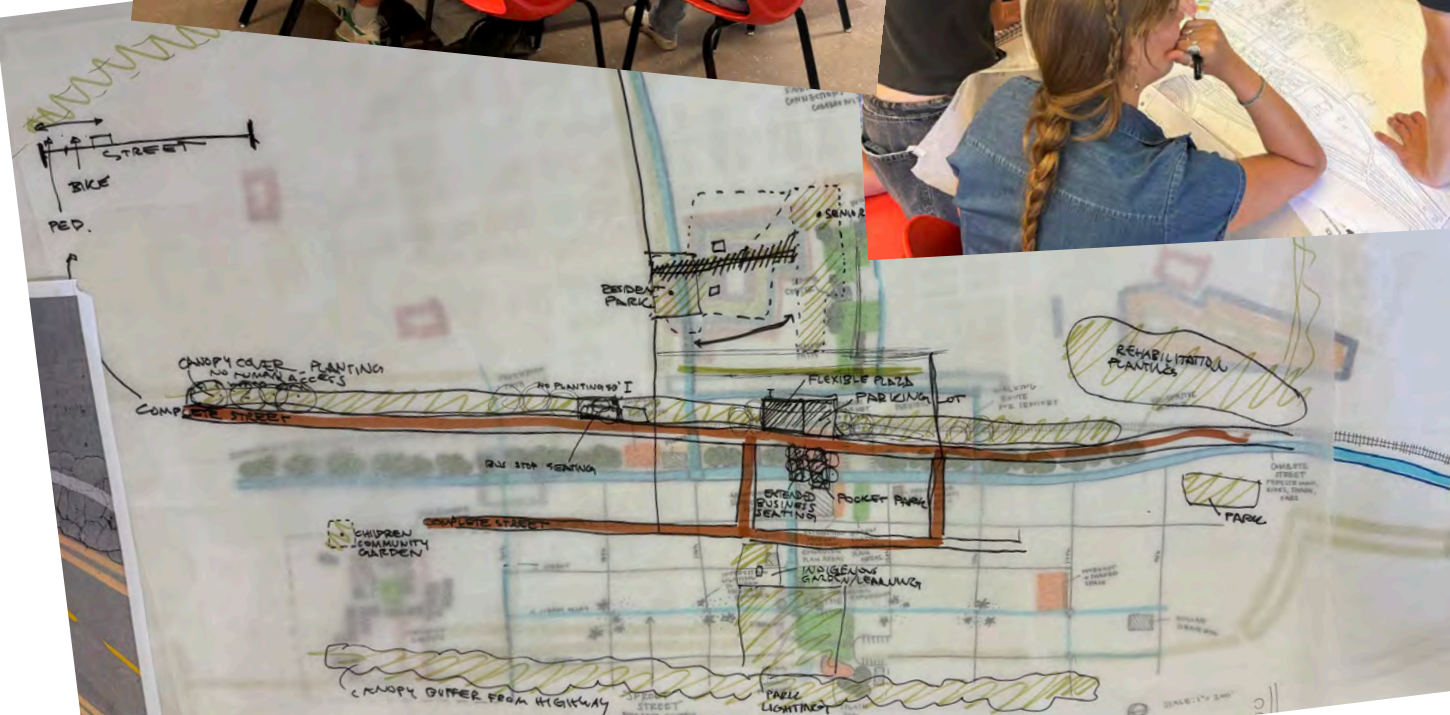
Stakeholder groups:

- Residents
- Special interest group
- Local industries and businesses
- Government agencies
- **Environmental advocates**





3 Negotiation





4 Proposal Development and Feedback

Each stakeholder group member selected one of the three proposals, forming a 5-member team to work on a proposal. Each member in a team represents the stakeholder group he/she worked on.

TALAVERA





4 Proposal Development and Feedback

DNA of San Miguel





4 Proposal Development and Feedback

Re-Wilded West





5. Master Plan and Site Development

TALAVERA

Team members

Wenceslao Campos Bonal:

Solenne Thelliez:

Adah Small:

Aiden Argue:

Talar Yerganian:

Stakeholder group representation

Residents

Special interest group

Local industries and businesses

Government agencies

Environmental advocates



5. Master Plan and Site Development- TALAVERA



Legend

- 1 Mission Street Marketplace
- 2 Mission Street Collective
- 3 Ecopark
- 4 San Miguel Senior Center
- 5 L Street
- 6 Mission Street
- 7 Railroad
- 8 Highway 101
- 9 Lillian Larsen Elementary
- 10 Natural area



5. Master Plan and Site Development- TALAVERA

Signage and Wayfinding





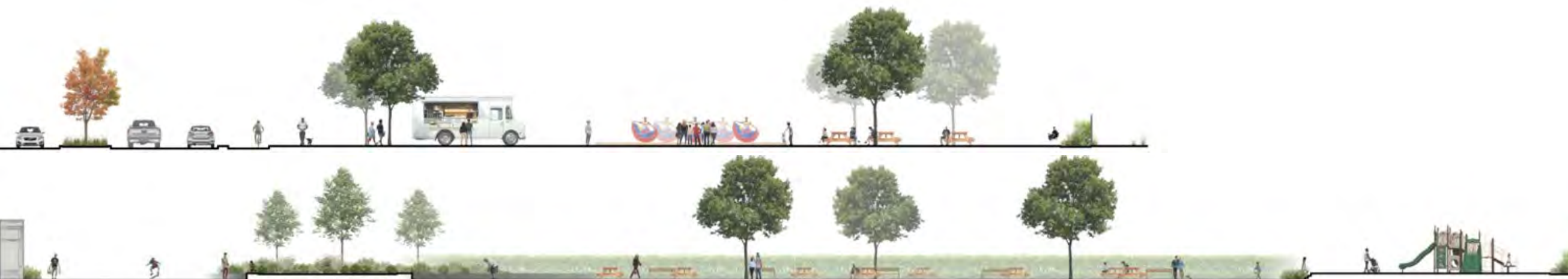
5. Master Plan and Site Development- TALAVERA

Mission Street Marketplace





5. Master Plan and Site Development- TALAVERA



Map Key





5. Master Plan and Site Development- TALAVERA





5. Master Plan and Site Development- TALAVERA



Map Key



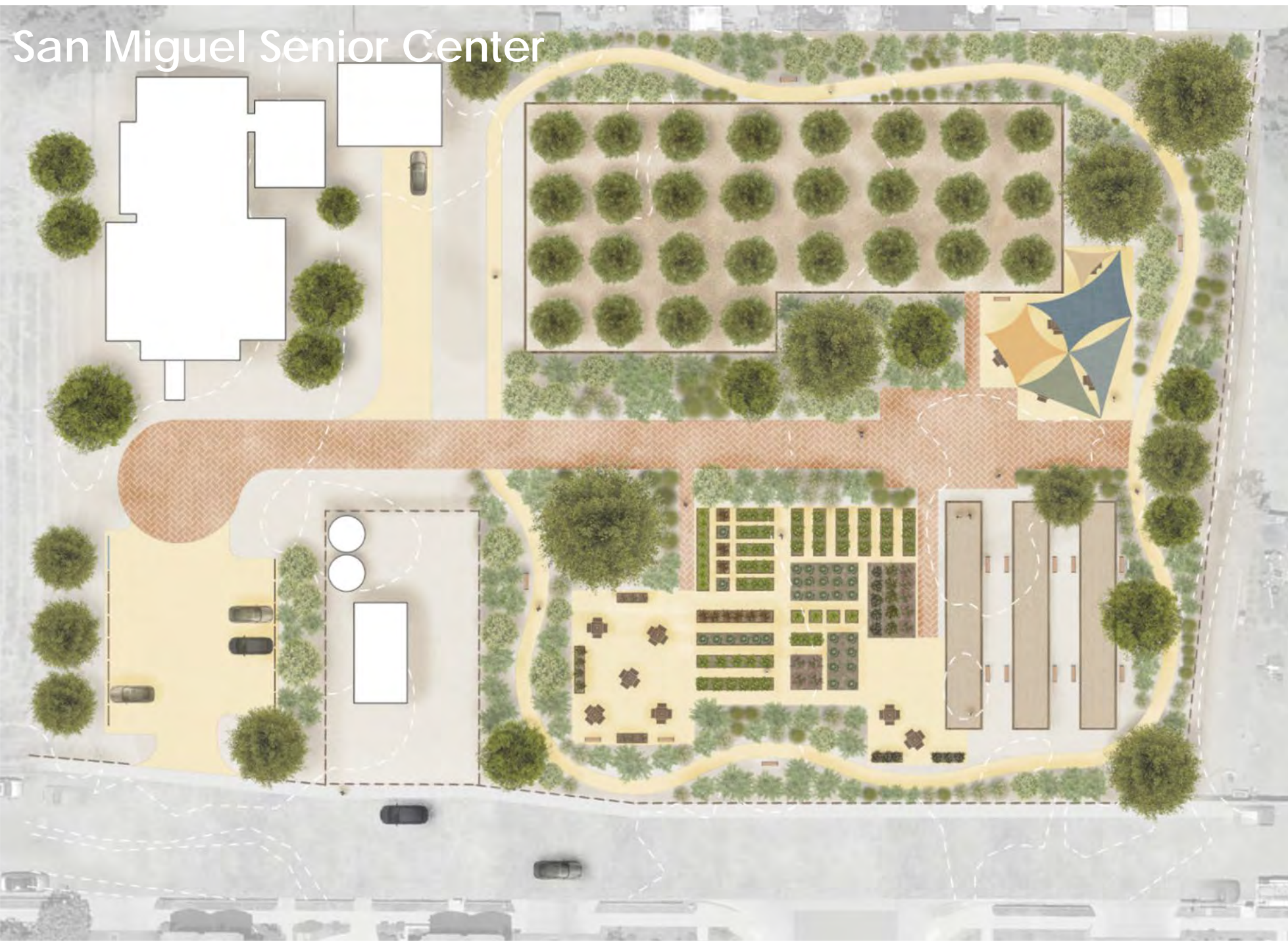


5. Master Plan and Site Development- TALAVERA





5. Master Plan and Site Development- TALAVERA



Map Key





5. Master Plan and Site Development- TALAVERA





5. Master Plan and Site Development- TALAVERA



Ecopark

Map Key





5. Master Plan and Site Development- TALAVERA





5. Master Plan and Site Development- TALAVERA



Map Key





5. Master Plan and Site Development- TALAVERA





5. Master Plan and Site Development

DNA of San Miguel

Team members

Brianna Contreras:

Maia Ernst:

Jennifer Grajeda:

Youssef Saleh:

Anna Spurlock:

Stakeholder group representation

Residents

Special interest group

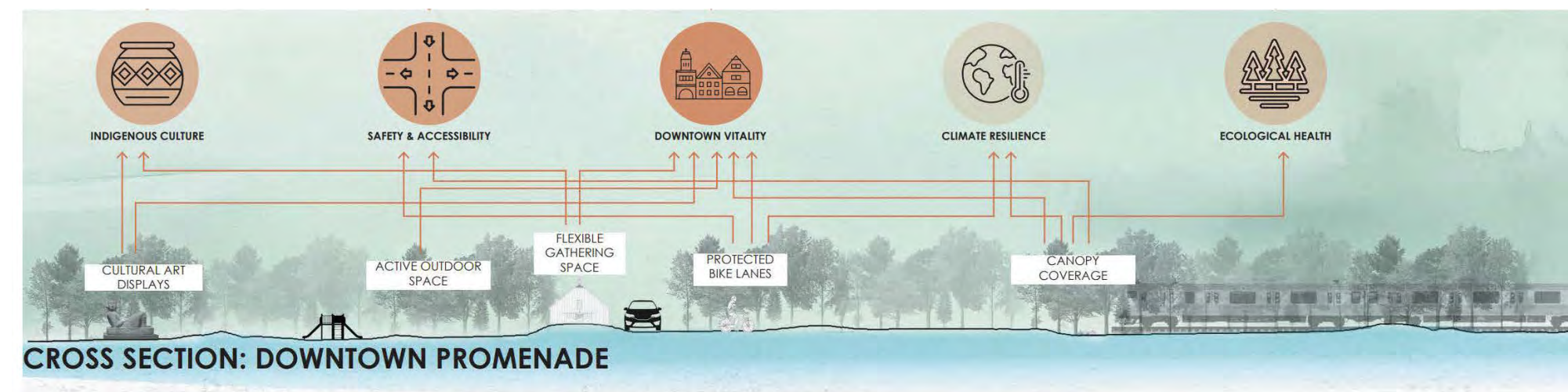
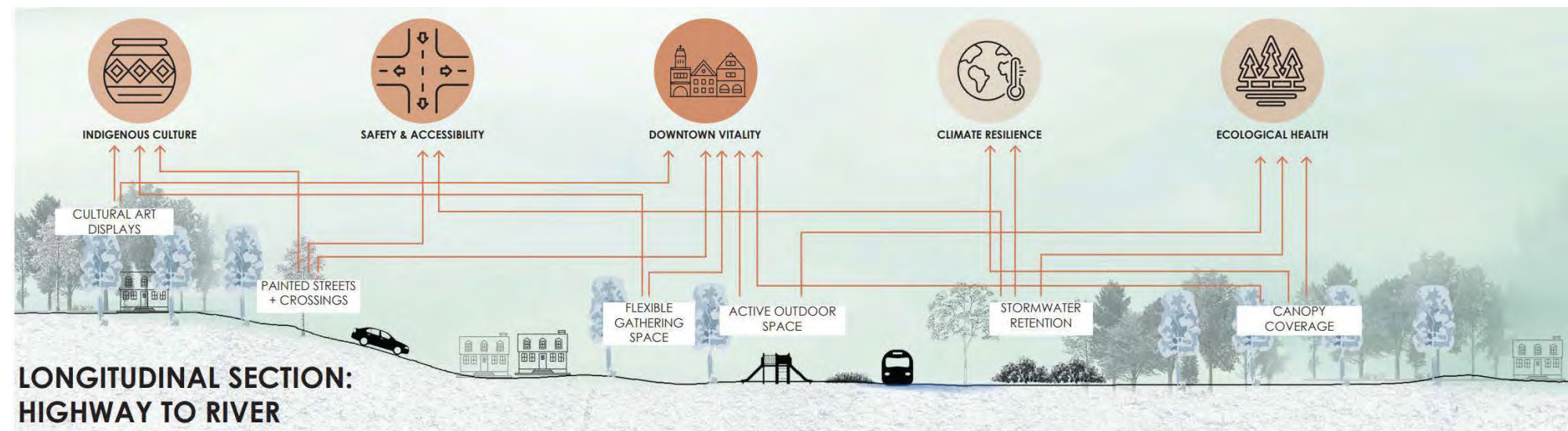
Local industries and businesses

Government agencies

Environmental advocates



5. Master Plan and Site Development - DNA





The Living Courtyard





The Living Courtyard





Color in Motion





Color in Motion





Rain to River





Rain to River





Wild Play





Wild Play





Under the Lights





Under the Lights





5. Master Plan and Site Development

Re-Wilded West

Team members

Aiden Kempf:

Lili Menkal:

Jack Spang:

Jeremy Mamaril:

Ted Donahue:

Stakeholder group representation

Residents

Special interest group

Local industries and businesses

Government agencies

Environmental advocates



5. Master Plan and Site Development- Re-Wilded West

Section Diagrams

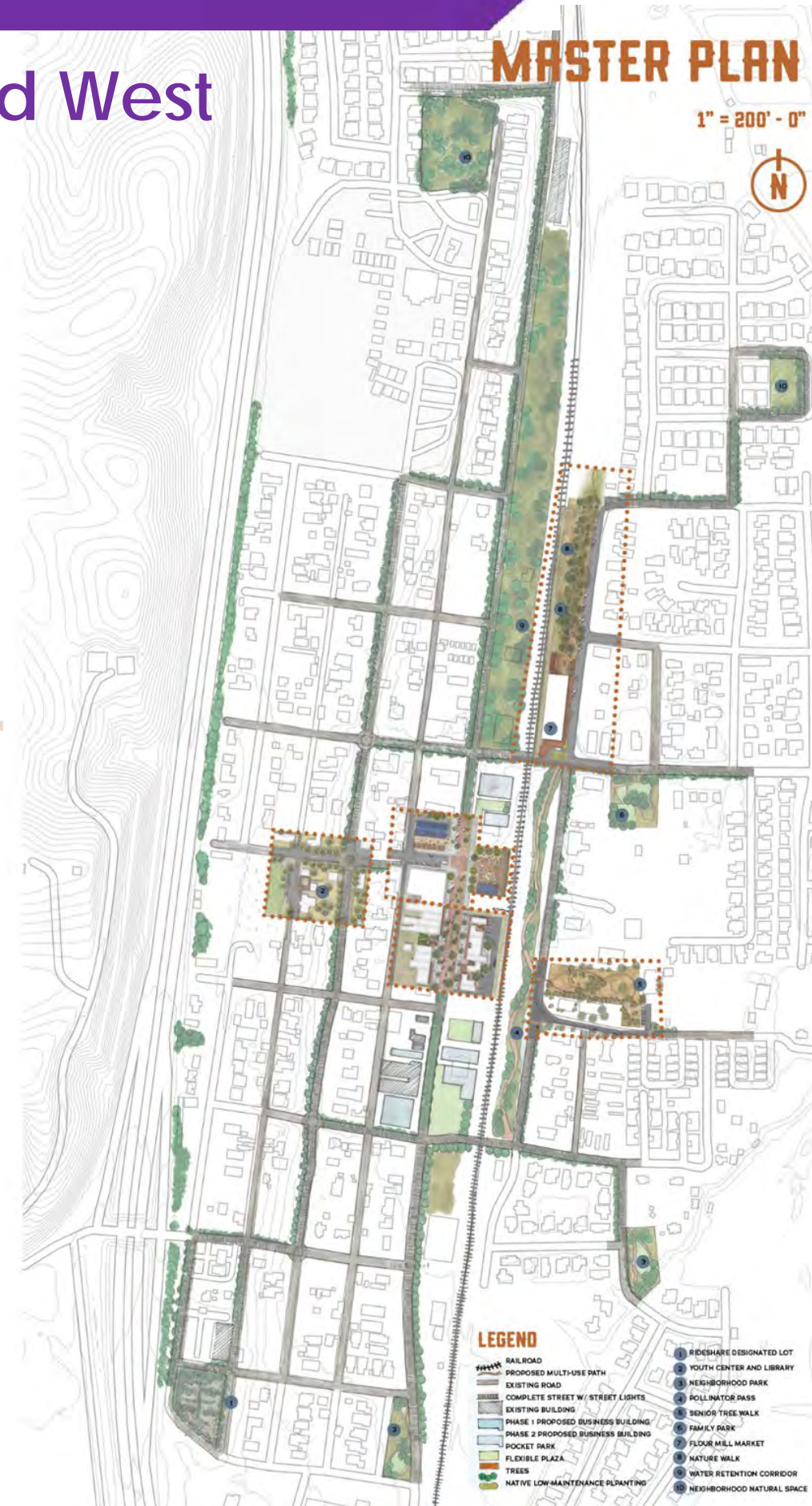


Interventions



MASTER PLAN

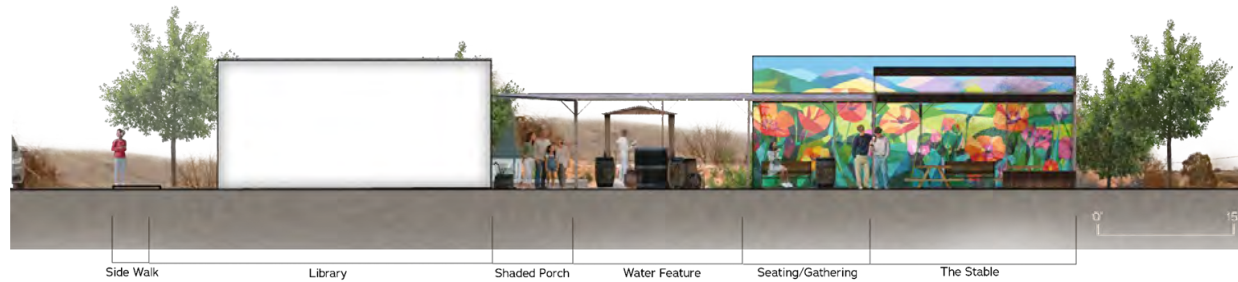
1" = 200' - 0"





5. Master Plan and Site Development- Re-Wilded West

Sheet Index map





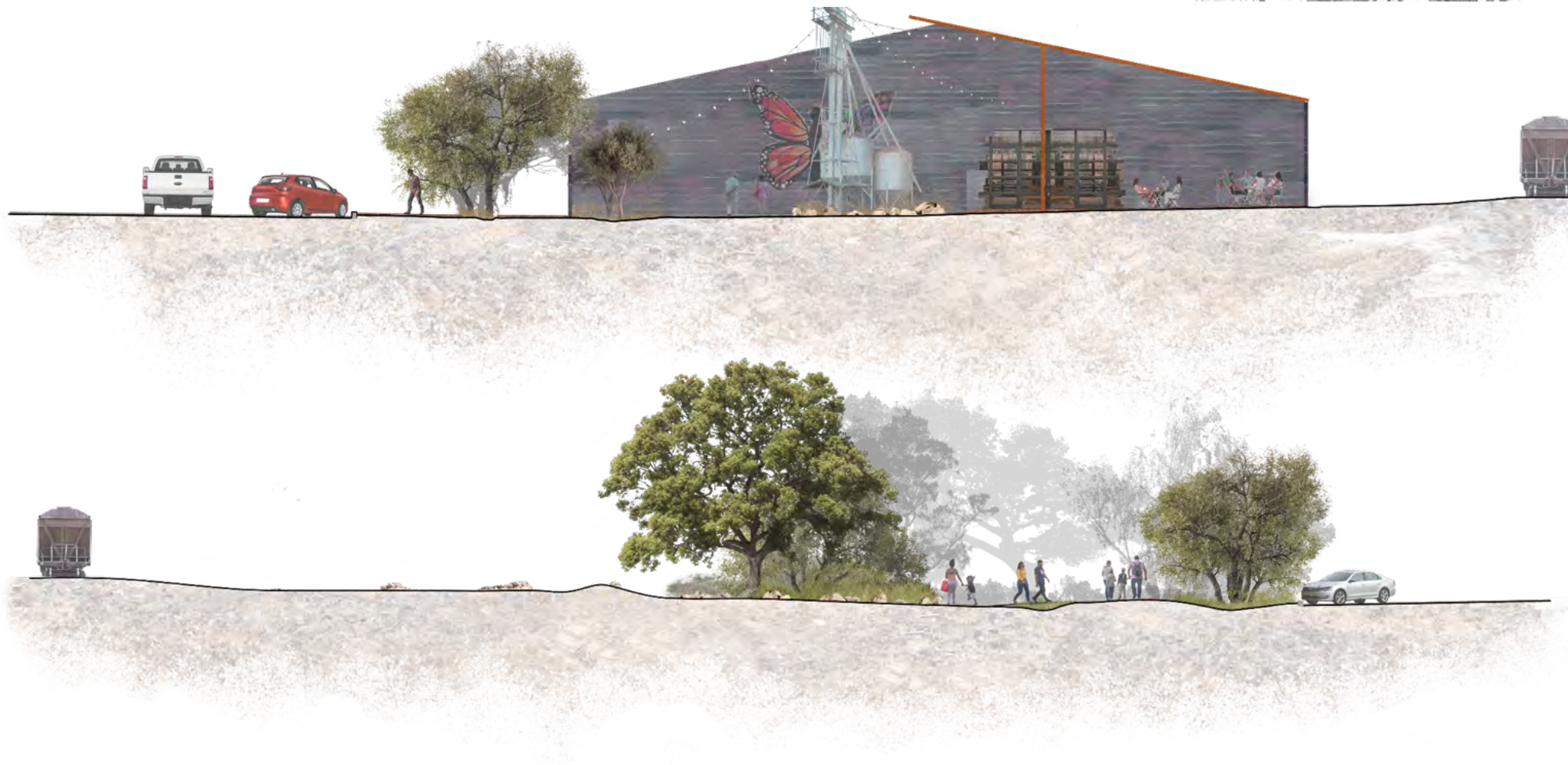
5. Master Plan and Site Development- Re-Wilded West





5. Master Plan and Site Development- Re-Wilded West

Sheet Index map





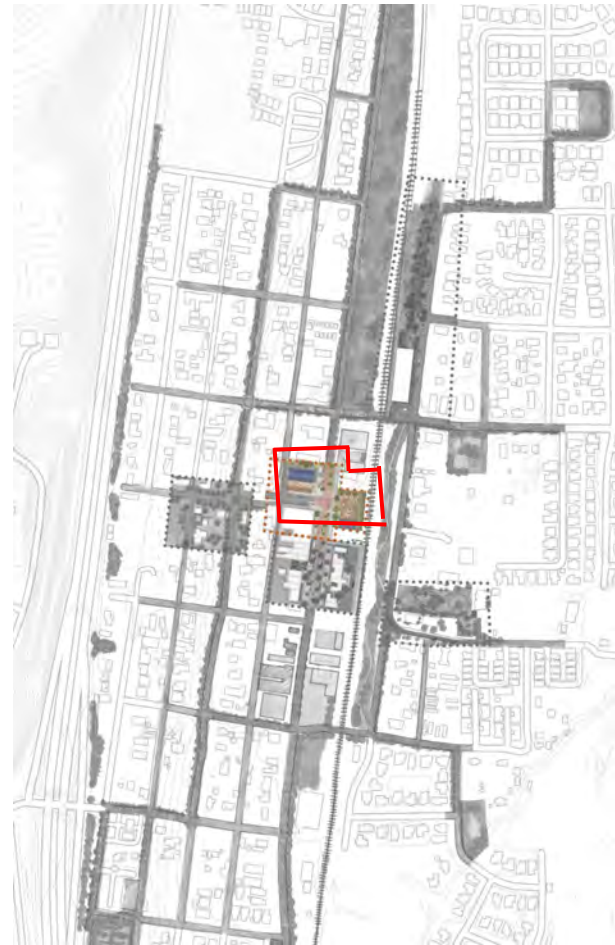
5. Master Plan and Site Development- Re-Wilded West





5. Master Plan and Site Development- Re-Wilded West

Sheet Index map





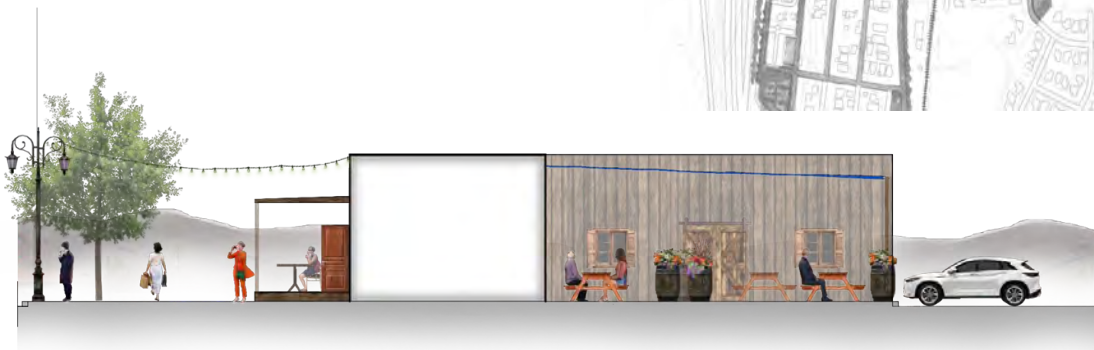
5. Master Plan and Site Development- Re-Wilded West





5. Master Plan and Site Development- Re-Wilded West

Sheet Index map





5. Master Plan and Site Development- Re-Wilded West





5. Master Plan and Site Development- Re-Wilded West

Sheet Index map





5. Master Plan and Site Development- Re-Wilded West



Thank you!
Questions and Comments?

Final Presentation | 1:30 pm to 3: 30 pm, Friday, 6/5
Dexter Building (34) at Cal Poly

